



BDB DESIGN BUILD

BUILDING CONTRACTORS



0114 240 3000



www.bdbdesignbuild.co.uk

INDUSTRIAL

COSTCO CRICK



CLIENT:

Costco Wholesale UK Limited

PROJECT:

Costco Crick Distribution Depot
Ecom Extension

LOCATION:

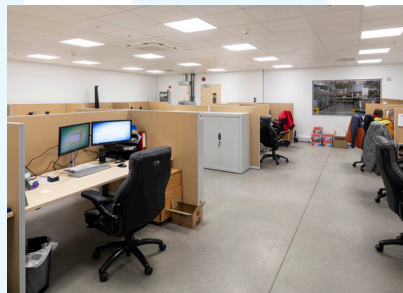
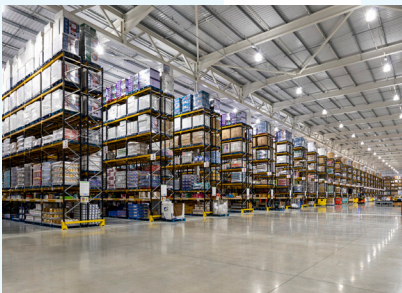
Dockham Way, Crick,
Northampton NN6 7TZ, 6 miles
east of Rugby and 14 miles
north-west of Northampton

SIZE:

110,093 sq. ft.

EXTERNAL AREA:

13,288m²



A project involving the design and construction of the ECOM depot extension and also external works of the site area.

Depot extension works included the installation of concrete floor slabs, wide span portal frames, a 'topdeck' membrane roof system, an insulated composite panel system, pre-cast concrete plinths, additional office and toilet facilities, an external canopy, concrete dock walls, full M&E works, a metal ramp, retaining wall and retained existing end wall.

External works construction consisted of concrete HGV hardstanding's and associated drainage, external rubber trailer stops, safe access footpaths, landscaping and lining works.

The site remained fully operational for the duration of the works, with minimum disruption caused.

